

TO: Service Locations

FROM: Technical Support Development

SUBJECT: **EPA07 MBE Engine Serial Number Interpretations**

ISSUE

Issues have arisen in the field on the interpretation of engine serial numbers for EPA07 MBE engines versus the EPA04 version.

ADDITIONAL INFORMATION

Listed below are the locations and interpretation of engine serial numbers of both the EPA07 MBE 900 and EPA07 MBE 4000 engines.

EPA07 MBE 900 Engines:

On EPA07 MBE 900 Series Engines, the engine serial number is located in the following locations:

Right rear side, top of engine block, near the deck face.....Figure 1

Top rear of engine rocker cover.....Figure 2

Top front of engine rocker cover.....Figure 3

Top of flywheel housing.....Figure 4

On EPA07 MBE 900 engines, all locations show a 14-digit engine serial number with a specific numbering sequence developed as follows:

- The first 3 digits show the series of the engine:
926 for the 900 Series Engine followed by a period (Figure 2)
- The second group is the specific model identifier for the engine:
961 for the EPA07 single turbo engine, specific to HP Rating
963 for the EPA07 single-turbo engine, specific to HP Rating
- The third group is the plant ID code:
S - for DDC (Detroit)
0 - (zero) for a Mannheim produced engine

- Prior to the 6-digit sequential serial number is a '0' acting as a placeholder for future volume.
- The fourth grouping in the sequence is the 6-digit sequential serial number.

Except for the stamping designated in Figure 1, all other engine serial number locations show the serial number without periods or dashes.

Depending on the vehicle configuration, some of these locations may be obscured, however it is always recommended to confirm the 14-digit serial number off the block when possible.

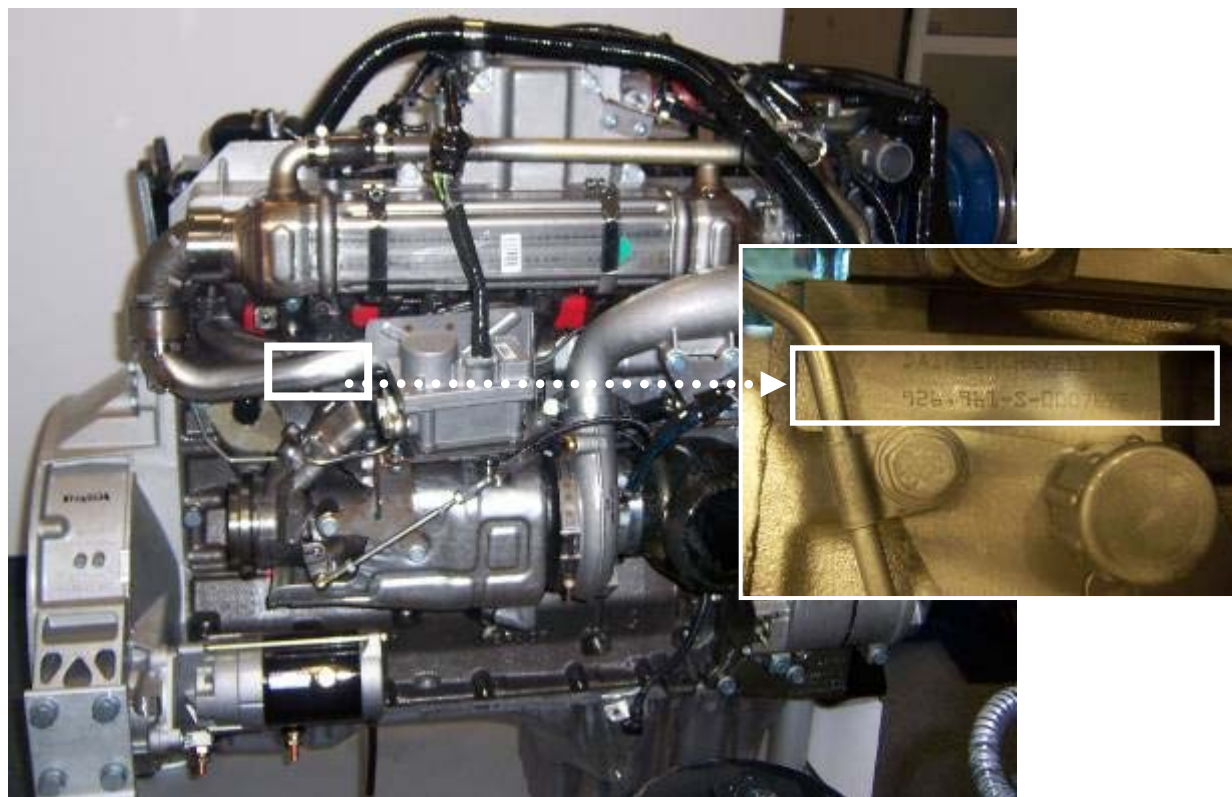


Figure 1. EPA07 MBE 900 Engine Serial Number located right rear side, top of engine block, near the deck face. Engine serial number contains a period and dashes.

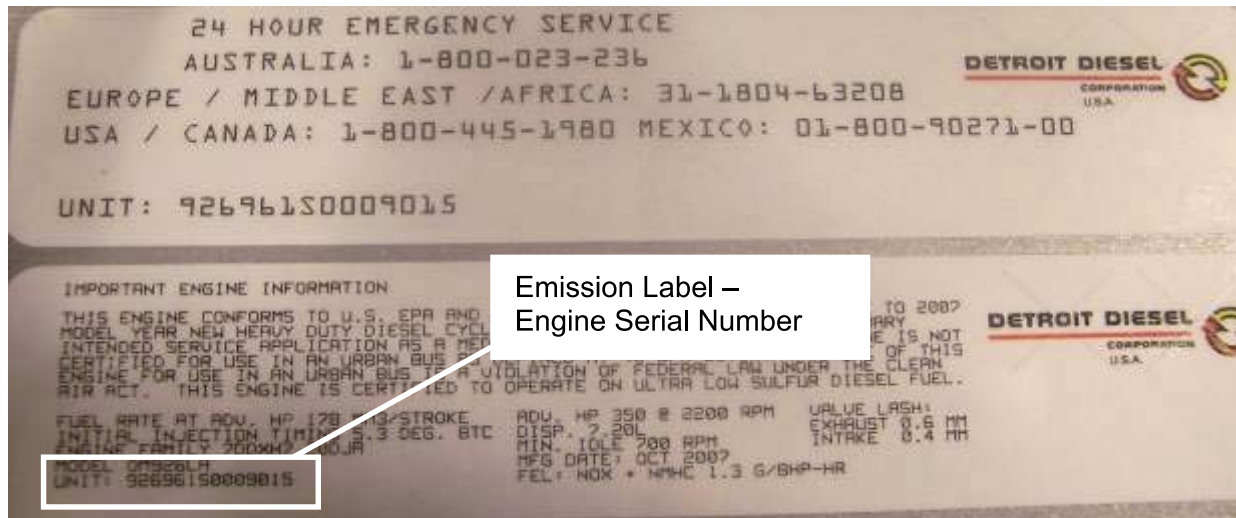


Figure 2. EPA07 MBE 900 serial number - top rear of engine rocker cover

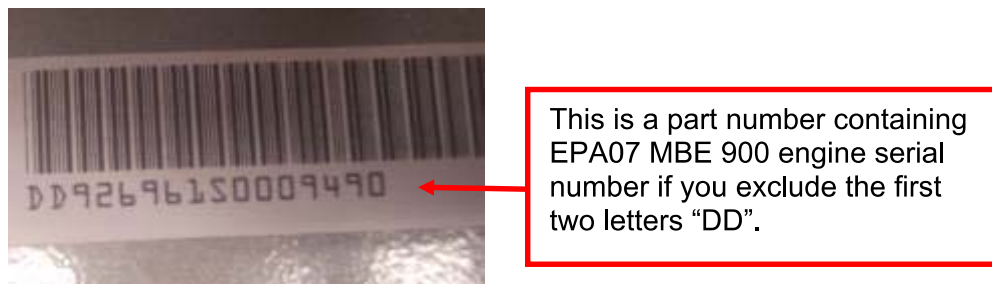


Figure 3. EPA07 MBE 900 serial number - top front of engine rocker cover

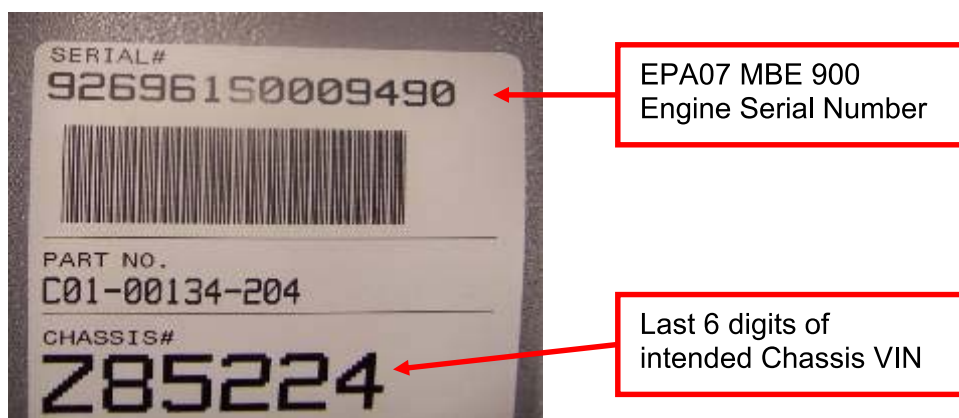


Figure 4. EPA07 MBE 900 serial number - top surface of the flywheel housing

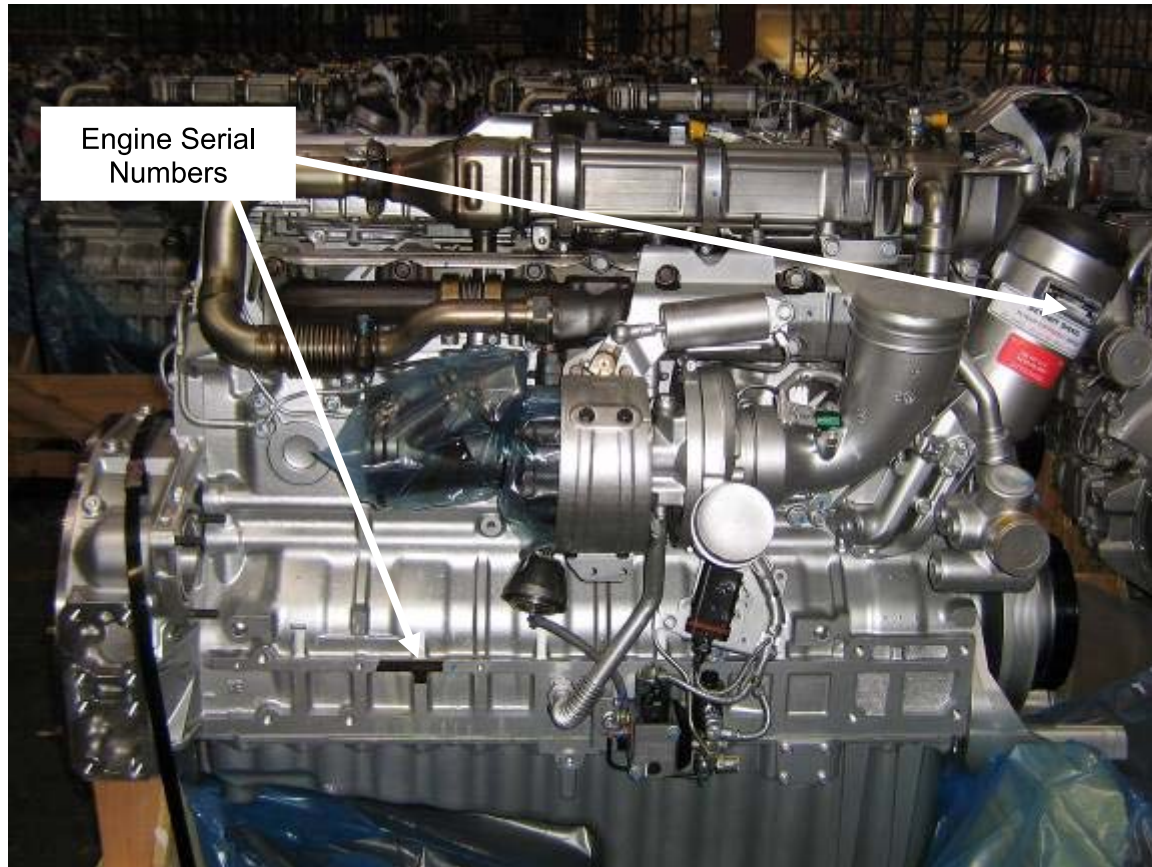
EPA07 MBE 4000 Engine:

Figure 5. EPA07 MBE 4000 Series Engine

On the EPA07 MBE 4000 Series Engines, the engine serial number is located in the following locations:

A tag riveted to the engine oil filter.....Figure 5, 6

Stamped into a pad - lower right side of the cylinder block, upper pan rail.....Figure 5, 7

These are the only locations to be used to determine the correct serial number for submitting claims. The location on the block should be used when possible.



Figure 6. EPA07 MBE 4000 – Engine Oil Filter Housing

Figure 6 shows the tag riveted to the engine oil filter housing depicting the 14-digit engine serial number on the second line of 460.975 U 0885727. This would be interpreted to a 10-digit of 0460885727. The 14-digit down to the 10-digit interpretation takes the last six numbers (always unique within an engine series) and adds the 0460 (engine series) to the beginning = 0460885727.

The OM 460 LA is MBE engine type or series reference. OM 460 is the Mercedes-Benz classification for what we call the MBE 4000 (only "branded" as such in NAFTA). The LA indicates the engine is intercooled.



Figure 7. EPA07 MBE 4000 Cylinder Block

Figure 7 shows the stamping of the 14-digit engine serial number on the upper pan rail located on the lower right hand side of the cylinder block.

The MBE 4000 engine serial number contains 14-digits and is interpreted down to a 10-digit number. In the case of the example provided (460.975U0885727) the engine serial number is comprised of the following:

460.975 - the baumuster or MB model number
 U - indicates the engine was built in Brazil
 0885727 - the actual engine serial number

NOTE: This 14-digit number of 460975U0885727 equates to a 10-digit of 0460885727. Use the 10-digit number for warranty claim purposes.



Figure 8. EPA07 MBE 4000 Emission Label (right label)

There are two labels depicted above, which are affixed to the engine on the rocker cover, driver's side:

The label on the left shows:

- 10-digit engine serial number on the top line
- Part # on the second line
- Last six digits of the VIN on the third line

NOTE: the 10-digit engine serial number on this label should not be assumed to be accurate – always confirm via the 14-digit S/N off of the block or oil filter housing by using the interpretation rules listed below Figure 7 of this document.

The label on the right of Figure 8 is the Emission Label. This provides the engine family and model year of the unit. On the MBE 4000, the engine serial number does not appear on the Emission Label.

CONTACT INFORMATION

Please contact the Detroit Diesel Customer Support Center at 313-592-5800 or email csc@detroitdiesel.com if you have any questions.